

**Looking for Training?
Connect Conference 2011 Has It!**

The Connect Conference provides training, technology and connections all in one event. The dates are: November 1, 2 and 3, 2011, in Fort Worth, Texas. Concerned about end of month? Registration and the welcome dinner are on the afternoon/evening of November 1st. Classes and training begin the following day.

Early Bird Registration Rate expires September 15, 2011!

The early bird rate of \$495 is set to expire soon! Make sure you register before the price goes up! That's a savings of \$150 for each attendee!

Announcing Keynote Speaker Jim Morris

Recently we announced our keynote speaker for the event is Jim Morris—the real life inspiration behind the Disney® movie The Rookie. Jim has an inspiring tale that will leave you wanting to hear more.

Targeted Training

Many of the classes during the Connect Conference are directly derived from the most common support issues or questions we get on both Legacy and Next Generation software. So, not only is this a great time to work with our trainers one-on-one and in a small group setting, but you can also speak with other dealers who face similar business issues as you and share best practices. **Some of our hot class topics include:**

Next Generation

- All New General Ledger
- Advanced Point of Sale
- Job Scheduler/EOD/EOM/EOY
- Taking Payroll Live
- Advanced Accounts Receivable

ECi Advantage Legacy

- Understanding Report Generator I & II
- Physical Inventory
- Preventative Maintenance
- EDI and Electronic Purchasing
- What's New With Advantage – Guidelines for Converting to Next Generation Advantage

This is a small sample of the training classes available. For more information, please call, email, or explore one of the links below. The ECi Team is very excited about the program we have put together for you.

Call:

Customers with questions about conference registrations and hotel

reservations may call: U.S. and Canada: 800-840-2523; International: 972-349-5932

Email:

General questions may be directed via email to: conference@ecisolutions.com

Questions about training sessions go to connectsessions@ecisolutions.com

Click:

We have prepared several links for your information.

Connect Conference Official Site:

- <http://connect2011.ecisolutions.com/>

Conference cost, hotel, etc.:

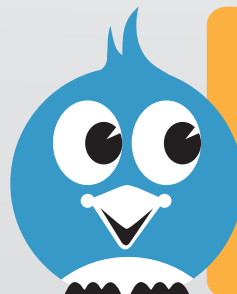
- <http://connect2011.ecisolutions.com/register.htm>

Classes List for Legacy and Next Generation:

- <http://connect2011.ecisolutions.com/sessions.htm>

Conference Agenda:

- <http://connect2011.ecisolutions.com/agenda.htm>

**Early Bird****\$495** Reg. \$645**ENDS 9/15/2011!****Content**

2011 Holiday Schedule	p. 2
Welcome NEW Customers	p. 2
ECi Adds 259 New Customers	p. 2
Legacy Software Webinar Schedule	p. 3
Legacy End-of-Year Class Schdule	p. 3
Onsite Training Available	p. 4
Computer Hacking Is on the Rise	p. 4

New Classes Added to the Next Generation Webinar Schdule	p. 5
Accelerate Your Business! Attend a FREE Webinar ..	p. 5
2011 IRS Tax Forms	p. 6

Legacy Software Webinar Schedule 2011

All times are Central time zone (CDT).

SEPTEMBER	Date	Time	Instructor
Payroll	September 13	10:00-12:00	Jill
Inventory Counts	September 14	2:00-4:00	Larence
AML Training	September 15	10:00-12:00	Al
OCTOBER	Date	Time	Instructor
Accounts Payable	October 4	10:00-12:00	Les
Inventory Counts	October 5	2:00-4:00	Larence
AML Training	October 11	10:00-12:00	Al
NOVEMBER	Date	Time	Instructor
Document Imaging	November 8	2:00-4:00	Larence
General Ledger	November 9	10:00-12:00	Les
Report Generator	November 10	2:00-4:00	Larence
Payroll	November 16	2:00-4:00	Jill
DECEMBER	Date	Time	Instructor
Advanced POS	December 8	10:00-12:00	Larence
Inventory Counts	December 13	2:00-4:00	Larence
AML Training	December 14	10:00-12:00	Al

The Legacy schedule serves software versions 0909 and higher. The current software version is 1101.009.

Classes are conducted via conference call and our online meeting website. Each session lasts approximately two hours. The conference call opens 15 minutes before the meeting start time. The instructor is available to assist people in accessing the website, so the class begins on time.

Attendance is limited to 12 companies per webinar. **Registration is required by 4 pm CDT one day prior to class.** Register for classes by calling 800-452-2502, select option 1 and talk with the support operator or anyone on the support team. Reservations are confirmed via email. Anyone attending class will need the email to obtain both the website and conference call information. The ECi operator is unable to transfer into the conference call.

Legacy End-of-Year Class Schedule

The Legacy End-of-Year class is for users on software versions 0909 and higher. Anyone that has ever struggled with end of year, or has never been through it before will benefit most from this training. Topics include year end preparation for all applications. The End-of-Year Steps document will be used to walk through the entire process. Payroll will be discussed at the end of the session.

Last year, many people did not register and joined the training session anyway. This caused classes to fill unexpectedly. Unfortunately, some companies that did register were unable to attend because the class

maximum had already been reached. We have reviewed our procedures and addressed this in three ways:

Class size is limited to 12 companies per session. All class materials will be distributed via email, including the website and conference call information. Anyone that wants to attend training must have the email.

Without registration, there is no way to access the class. The conference call is handled through the class website, and is outside the ECi phone service. The ECi operator cannot transfer anyone into the conference call.

Additional classes will be scheduled based on demand.

All classes are Central Standard Time (CST).

End-of-Year Classes

October

18th Tuesday 2-3:30 PM
20th Thursday 9-10:30 AM

December

6th Tuesday 9-10:30 AM
7th Wednesday 2-3:30 PM
20th Tuesday 9-10:30 AM

Onsite Training Available

Sometimes it's just better and/or more cost effective to be on site at your business. With onsite training, an ECI trainer can observe current procedures and make recommendation to help streamline and increase business productivity. When the bookkeeper retires, or there are new people to train,

two or three days of onsite training will make a big difference in saving you money in the long run.

One-on-one, in-house training is available at the ECI office in Big Sandy, Texas. In-house training allows people to avoid all distractions and focus on

learning the application features that are most important to your organization.

Please contact Installation and Training Manager Ed Brown or the Sales team at 800-452-2502 for more information.

Computer Hacking Is on the Rise

In an effort to further secure your network and keep it from becoming vulnerable to viruses and hackers, you should take steps to ensure your system is protected and stays protected. One way to do this is to install or enable a "hardware" firewall. A firewall is a component placed between computers and networks to help eliminate undesired access by the outside world. The firewall is the first line of defense between your network and the Internet. These devices are an excellent investment, if properly configured and maintained. Most firewalls built for home use are not sufficient to run as a firewall for your business. Examples of firewalls not suitable are Linksys, 3com and 2wire.

Your existing broadband router will have service ports turned on that allow or deny access to your network for various reasons such as support and other means of communication. Check to see which ports are open and of those which ones can be closed to limit exposure to your system from the outside world. Also if you are using telnet (Port 23) to connect to your server from the Internet, check to see if you can use an SSH (Port 22) client instead. The Secure Shell

(SSH) is a more secure yet flexible replacement for the "telnet" client. SSH utility establishes a session between the client and the server using an authenticated and encrypted connection. Finally, a firewall can protect your network further by filtering access on the ports you are using to the people you want to use them.

that someone may get unauthorized access to the Advantage server.

Firewalls and passwords can only go so far in helping to protect your network. Our customers that use Microsoft® Windows® PCs on their network are the most vulnerable. The reason is that more than 90% of the world's viruses are written to

Just 15 minutes of security planning will save you time and money.

The second line of defense is secure passwords on your Advantage server. The Advantage server has two password fields, one for the operating system and one for the Advantage software. The operating system needs to have a secure password of six or more characters, preferably more than eight characters. These passwords should not be the same as the username (e.g., username: john, password: john or john1). These passwords are relatively easy to guess, and since John is a common name, it would be more likely to be attempted. Giving each user a unique username and password lessens the chances

attack computers with the Windows operating system on them. Viruses are released every day, about four per day according to Panda Security Antivirus. A single PC infected with a virus can cause your entire network to come to slow down. Some viruses even allow a remote user (usually the virus writer or community) to control the PC remotely through a backdoor connection. Therefore, it is crucial to have an up-to-date virus protection application. Virus protection vendors release updates for their software almost every day. So your antivirus program should be set to automatically check for updates.

NEW CLASSES ADDED TO ECI NEXT GENERATION WEBINAR SCHEDULE

September

Tuesday	Wednesday	Thursday
13	14	15
2:00 Payroll Processing	9:00 Inventory Administration	2:00 Inventory Stock and Pricing
20	21	22
9:00 Inventory Counts & Management	2:00 Accounts Receivable Administration	2:00 Accounts Receivable Processing

October

Tuesday	Wednesday	Thursday
4	5	6
2:00 Point of Sale Administration	9:00 Point of Sale Order Entry	9:00 Point of Sale Quotes & Estimates
11	12	13
2:00 Purchasing Administration	9:00 Purchasing Processing	2:00 System Manager
18	19	20
9:00 User Manager	9:00 General Ledger Administration	2:00 General Ledger Processing

November

Tuesday	Wednesday	Thursday
8	9	10
9:00 Accounts Payable Administration	2:00 Accounts Payable Processing	9:00 Cash Drawer Manager
15	16	17
9:00 Bank Account Manager	2:00 Payroll Administration	2:00 Payroll Processing

December

Tuesday	Wednesday	Thursday
6	7	8
2:00 Inventory Administration	9:00 Inventory Stock & Pricing	9:00 Inventory Counts & Management
13	14	15
2:00 Accounts Receivable Administration	2:00 Accounts Receivable Processing	

All times are Central Daylight Time (CDT)

“Inventory Counts & Management” and “Point of Sale Quotes & Estimates” are just two of the six NEW classes offered in the expanded training schedule. The following classes are for the ECI Next Generation software product versions less than 2.0.5.0.

Webinar training is conducted via conference call and online meeting. The call opens 10 minutes before the meeting start time. The instructor is available to assist people in accessing the website so training begins on time. Attendees will be able to see the entire process and ask questions along the way.

Registration Required

Email invitations are sent with the link to the website, conference call and other class materials. Attendance is limited to 12 companies per webinar. **Registration is required by 4 pm CDT one day prior to class.** Save your seats by calling 800-452-2502, option 1, and talking with the operator or one of the support team.

Acsellerate Your Business! Attend a FREE Webinar

Earlier this year, ECI Acsellerate announced its integration with Legacy and Next Generation Advantage software. LBMH dealers have already been realizing the benefits of using sales intelligence along with integrated CRM, to understand their customers' purchase patterns. Acsellerate's customizable reports, advanced analytics and contact management applications help businesses realize their best opportunities to grow sales

and margin, while saving time and increasing efficiency.

Acsellerate's Web-based application is flexible and easy-to-use, providing the insight needed to identify your top priorities and achieve your business goals. It automatically integrates with your Advantage system, allowing you to immediately start improving the health of your business.

Sign up for a free webinar and see for yourself how Acsellerate can help make an immediate improvement in your business.

Webinar Dates:

September 7, 2:00pm EDT
 September 14, 3:00pm EDT
 September 21, 11:00am EDT

Register NOW!

<https://student.gototraining.com/5z8v1/catalog/109156879/>

